A series of abstract, colorful geometric shapes are arranged in a stepped pattern. From left to right, there is a large teal shape with a rounded bottom-right corner, a smaller dark blue square, a tall lime green vertical bar, a medium-height teal vertical bar, a shorter lime green vertical bar, and a dark blue semi-circle at the top right.

Quality Modular Buildings

In stock for hire or to purchase
October 2023

Who We Are

We are Algeco. The market-leading UK provider of modular and portable space solutions.

Our purpose

Together, we build sustainable futures.

Almost 60 years of hire solutions

We've been helping organisations solve their temporary space challenges quickly, easily and cost-effectively for 60 years.



Why Algeco?

Save time, hassle, and expense managing multiple suppliers. Our hire products are available instantly nationwide, with quick, hassle-free installation.



Turnkey Solutions

Our turn-key services provide all the exterior and interior facilities you need for your project through one point of



Best Value

Through economies of scale, our products and services balance quality to offer you the best value possible.



Availability

With over 40,000 portable and modular units for rent in the UK, we have the best product availability on the market.



UK-Wide Service

With locations throughout the UK, we can deliver and install your portable buildings directly to your site, no matter where you



On time, on budget? How good are we? Ask our customers.

We ask after every project how well we've done and use the Net Promoter Score system to understand satisfaction. Our latest results are scored as Excellent.







Strength in Depth

Algeco is part of the Modulaire Group

Europe & Asia Pacific's leading business service company

-  25 countries in Europe and Asia
-  6,000 employees in 250 locations
-  250,000 units with fleet net book value

Algeco UK Limited

-  1,200 Employees in 23 locations providing over 40,000 units
-  Huge product range from containers to multi-storey
-  Two assembly factories in Cannock and Carnaby
-  20 branches covering the whole of the UK in three regions



Complete site set up through one point of contact

Building structures are only part of Algeco hire solutions. Our one-stop-shop provides all the interior and exterior details of your temporary building hire, installed and ready to go.

Whole solutions, not just building shells

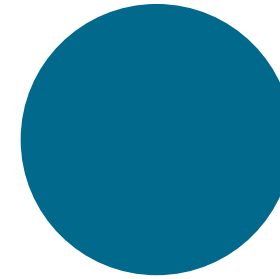
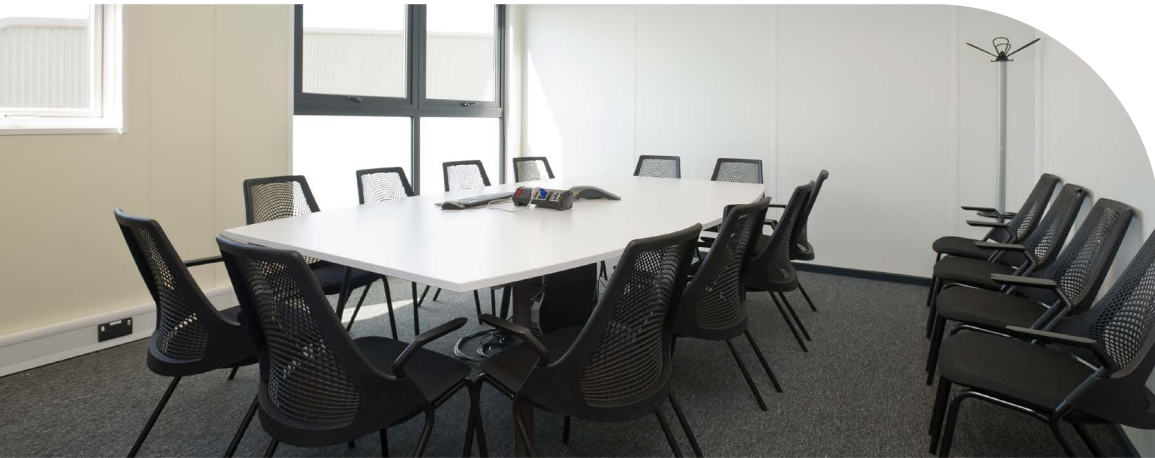
Avoid juggling multiple suppliers, purchase orders and invoices. Arrange everything from fencing and furniture to fire safety equipment and white goods before your accommodation arrives.

We can even supply Wi-Fi data, display your branding on the outside of your building and keep consumables like hand sanitiser stocked up.

Make life easier

Sourcing everything you need from one provider means you and your teams can get to work faster with less hassle. It also means you spend less time coordinating and communicating with suppliers, which results in fewer moving parts on-site.





Here's a selection of interior and exterior products and services we can include with your temporary accommodation.

 **Building Regulations Compliance**

 **Site Surveys**

 **CDM Regulations Compliant**

 **Foundations**

 **Data Systems**

 **Fire & Intruder Alarms**

 **Principal Designer /
Principal Contractor**

 **Climate Control Systems**

 **Ventilation Systems**

 **Renewable Technologies**

 **BREEAM Compliant**

 **Enabling Works**

 **Design Services**

 **Building Management Systems**

 **BIM Models Available**

 **Temporary Accommodation**

 **Steps, Staircases & Ramps**

 **Access Control Systems**

 **HTM / HBN / Building
Bulletins Compliance**

 **White Goods**

 **Wi-Fi Data**

The Versatile Option

All of our stock buildings can be prepared for a variety of applications:

- Office Accommodation
- Welfare/Canteen Accommodation
- Health Centres/Temporary Wards
- Classroom Accommodation

Algeco modular buildings (for hire) met the relevant Building Regulations at the time of manufacture, so achieve Building Control approval for public use.



Office Accommodation



Single-Storey Office Building

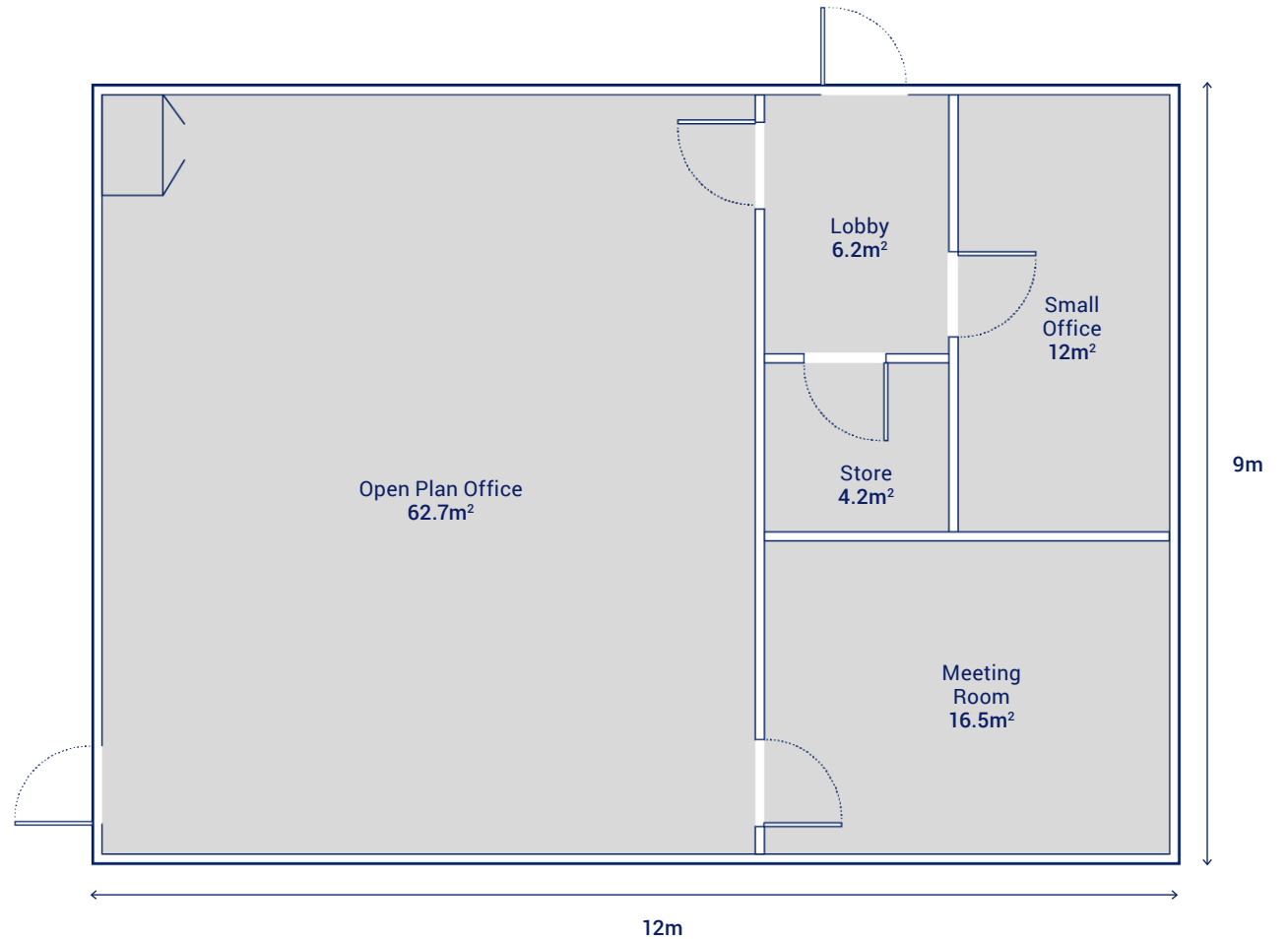
Ref: PCL300

Dimensions: 9m x 12m

Number of modules: 3

Overall size: 108m²

Single-storey office building comprising of open plan office space, meeting room, kitchen area & toilets.



Two-Storey Admin Building

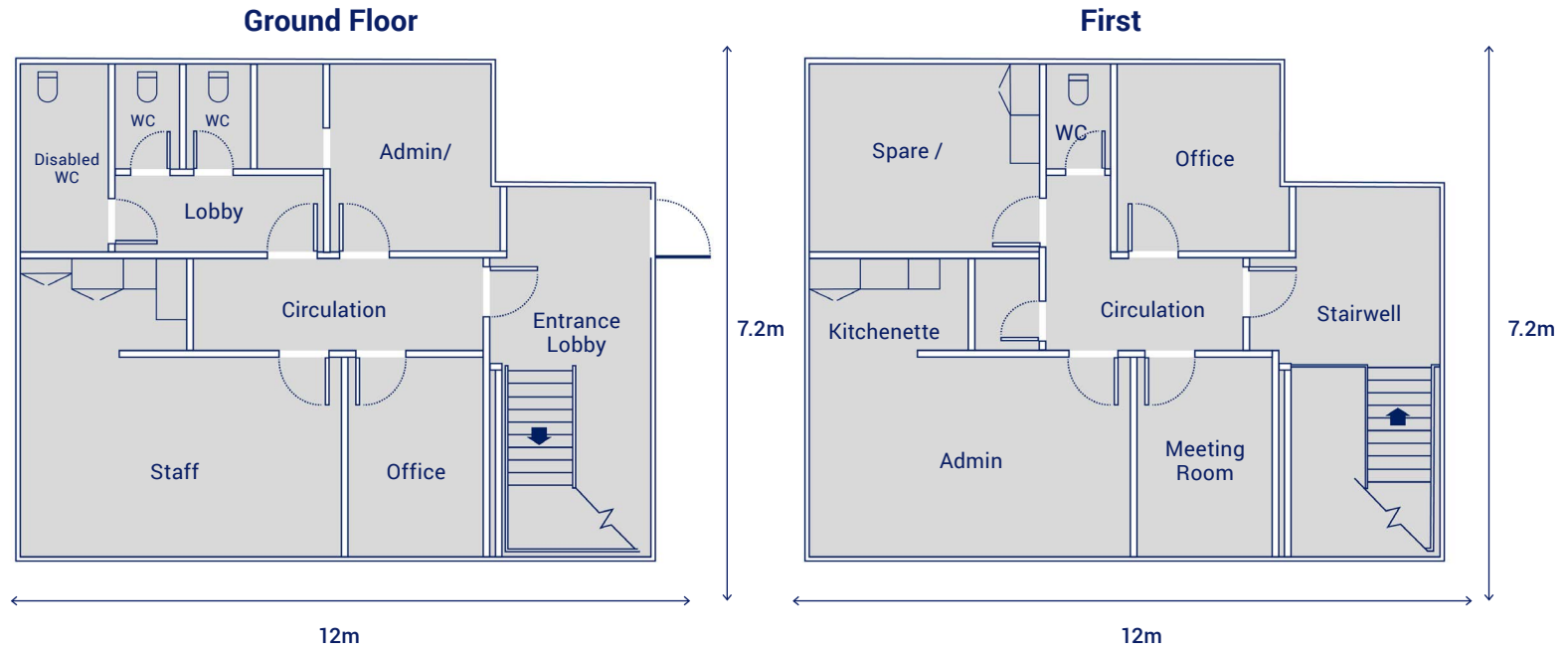
Ref: SL0060

Dimensions: 12m x 7.2m

Number of modules: 8

Overall size: 173m²

Two-storey office building consisting of offices, kitchenette, store rooms and toilets.



Two-Storey Office Building

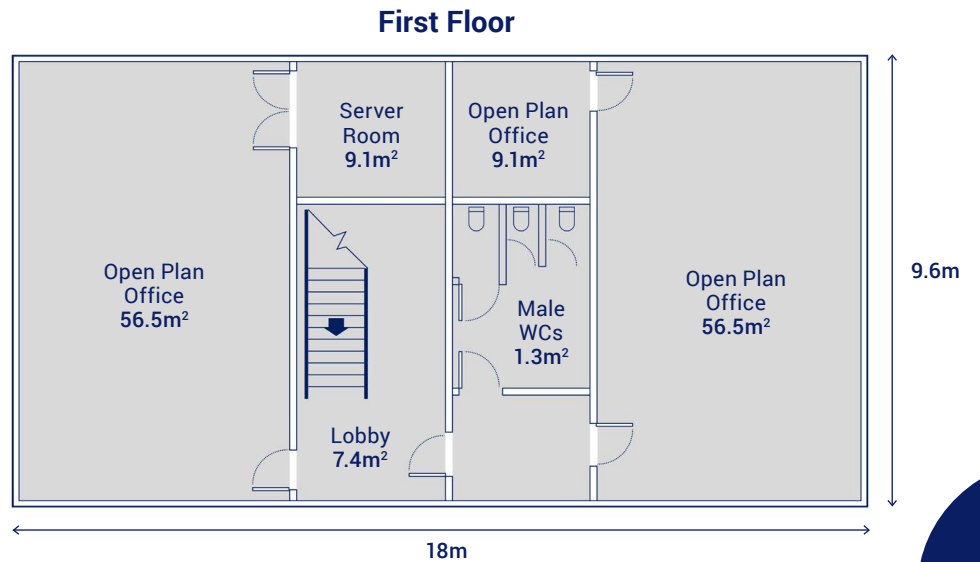
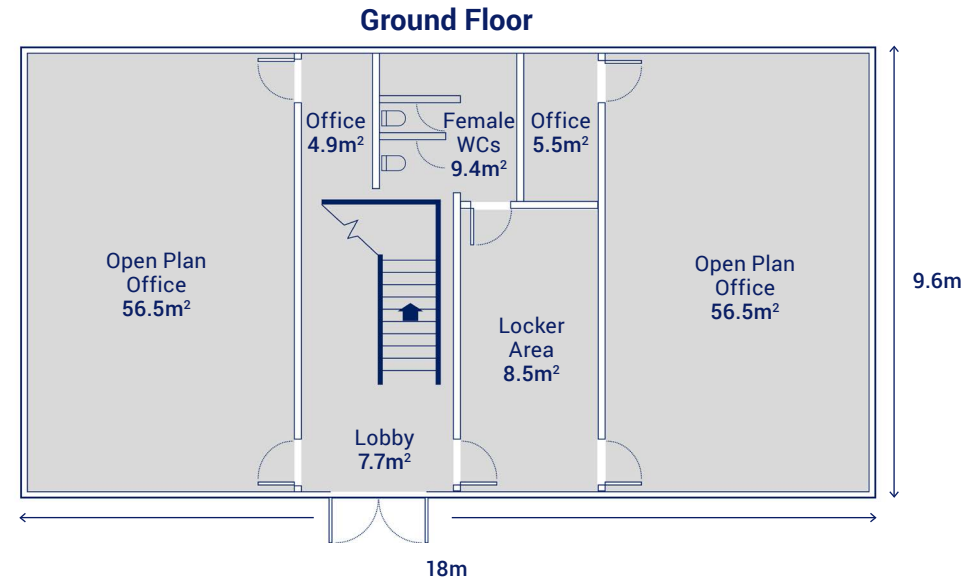
Ref: PCL302

Dimensions: 9.6m x 18m

Number of modules: 12

Overall size: 345.6m²

Two-storey office building comprising of open plan offices & ancillary space.



Similar layouts also exist, please ask us for more information.

Two-Storey 4 Office Building with Toilets

Ref: 1296DSFCTD (Office)

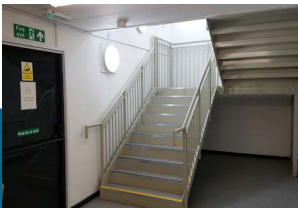
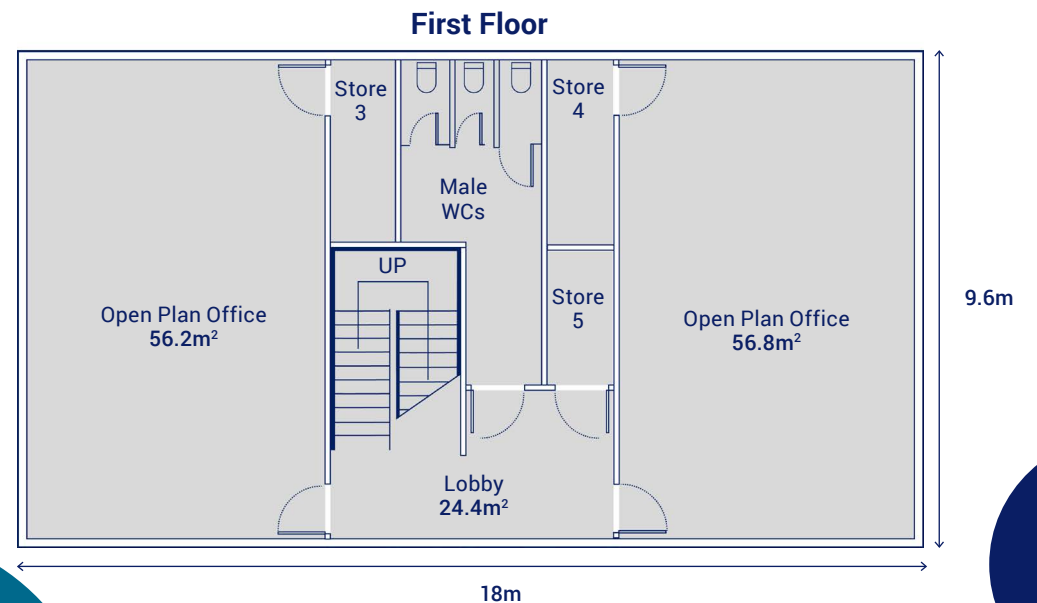
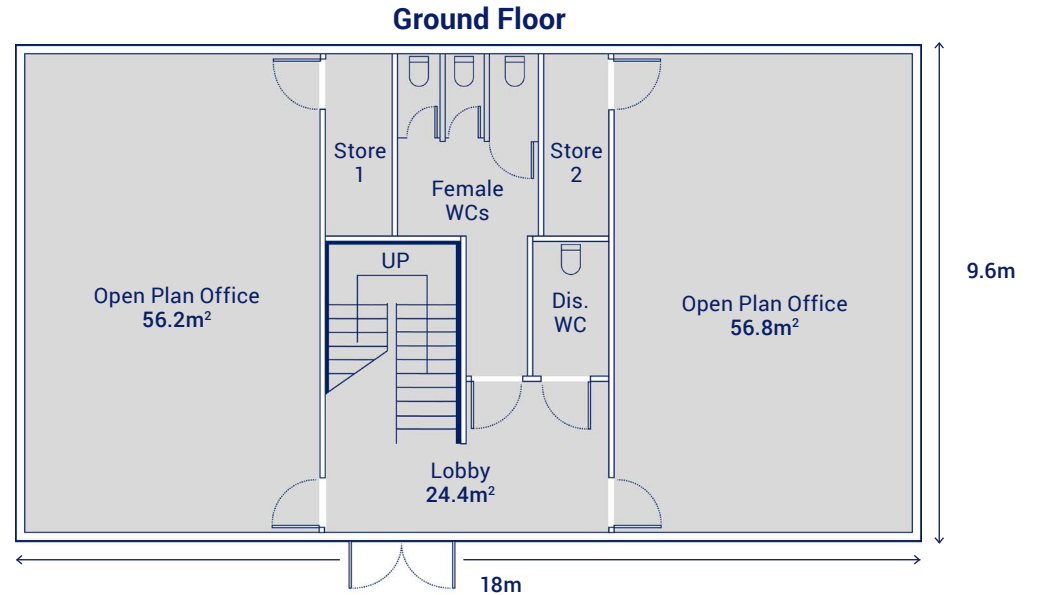
Dimensions: 9.6m x 18m

Number of modules: 12

Overall size: 345.6m²

Two-storey building comprising of 4 open plan offices with lobby area, store rooms & toilets.

The building has been designed in line with building regulations.



Office/Welfare Building

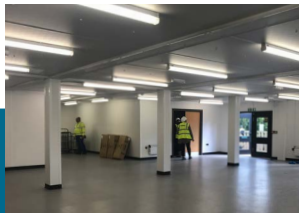
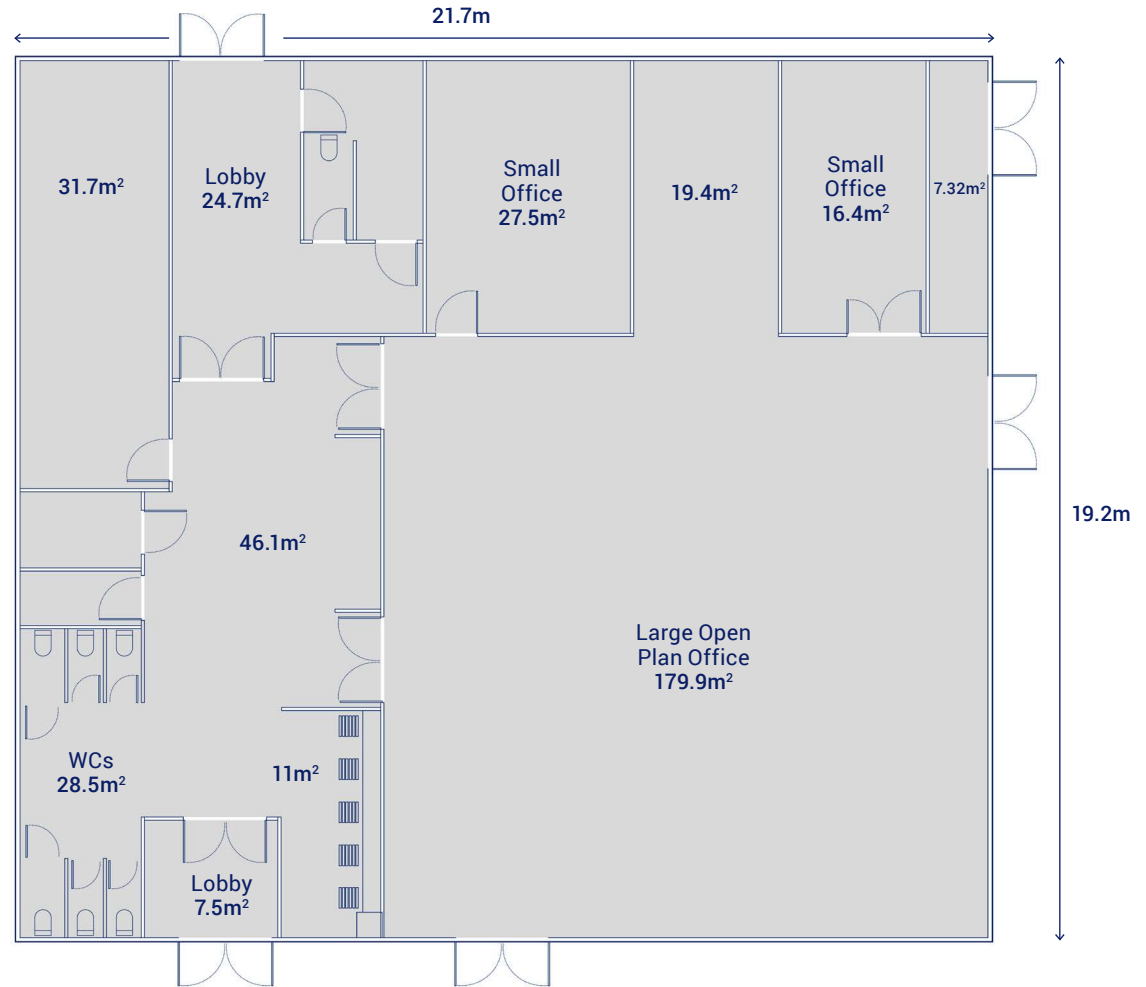
Ref: PCL282

Dimensions: 19.2m x 21.7m

Number of modules: 14

Overall size: 416.64m²

Single-storey modular building comprising of large, flexible, single-storey space suitable for use as office or welfare



Classroom Accommodation



Single-Storey Double Classroom

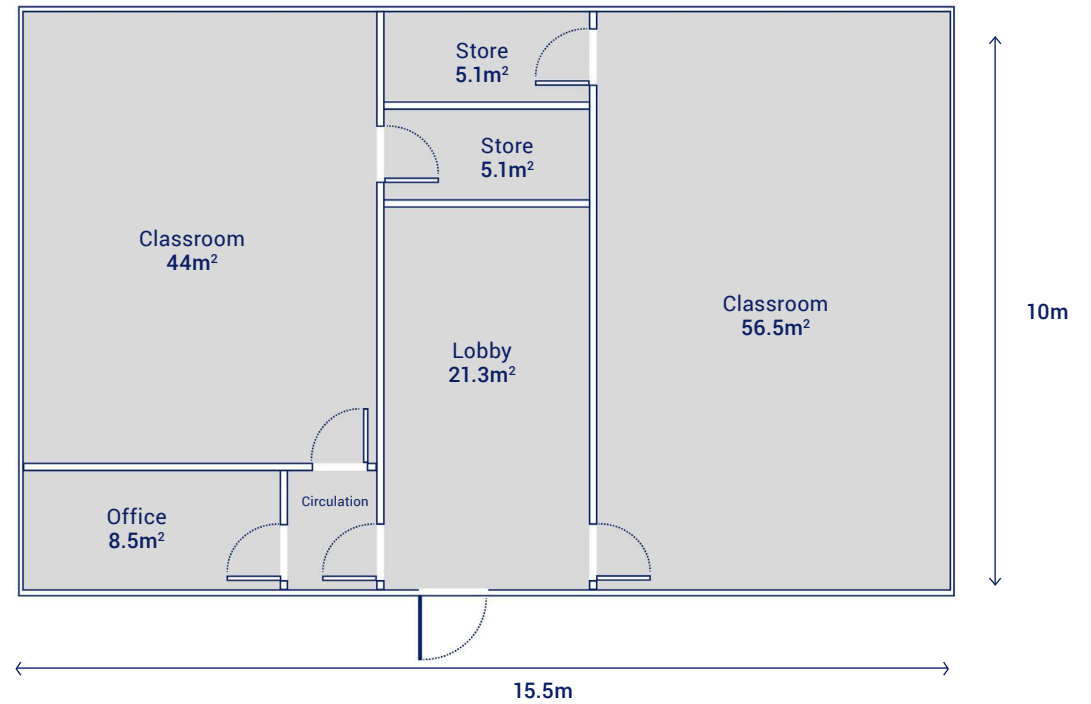
Ref: PCL0321

Dimensions: 15.5m x 10m

Number of modules: 5

Overall size: 155m²

A single-storey classroom building with 2 classrooms 44m² and 56m², office and 2 store rooms.



Single-Storey Double Classroom

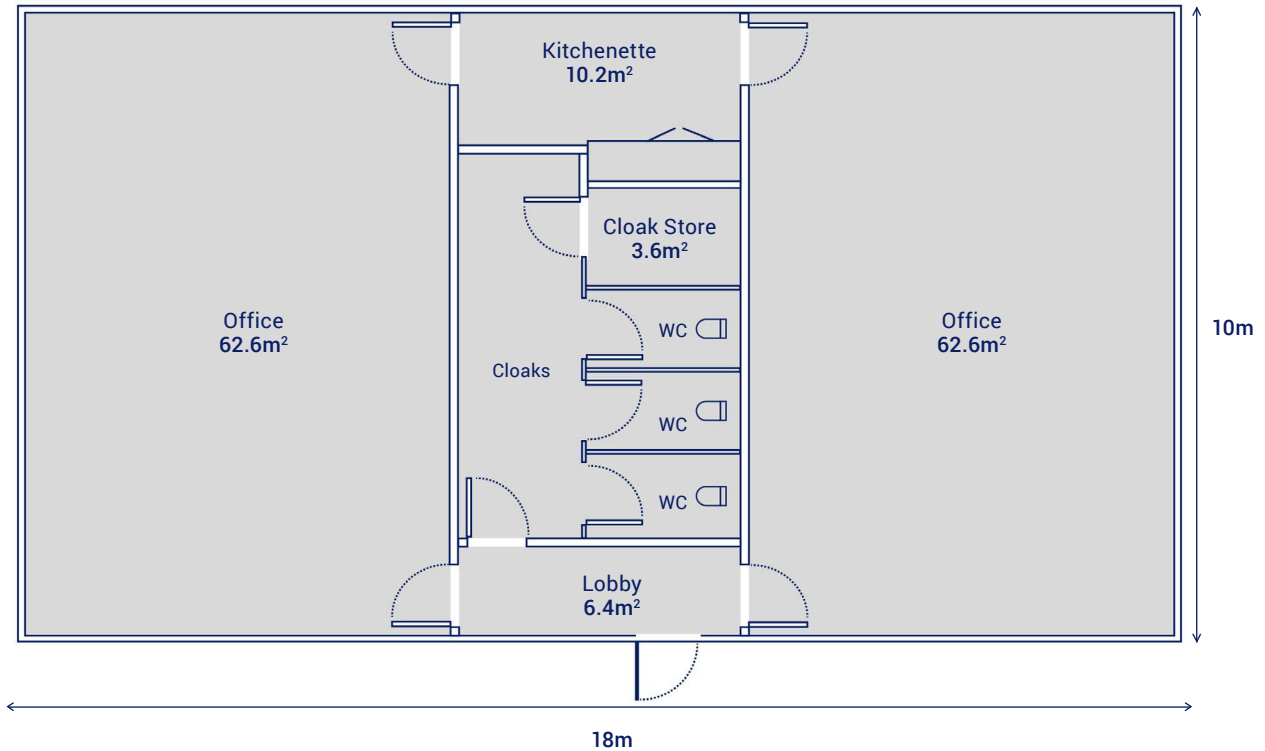
Ref: PCL0320

Dimensions: 18m x 10m

Number of modules: 6

Overall size: 180m²

A single-storey double classroom building with 2 classrooms 62m², 3 WCs, kitchenette and cloak area. This building has been designed to meet current building regulations.



Single-Storey Primary/Reception Classroom

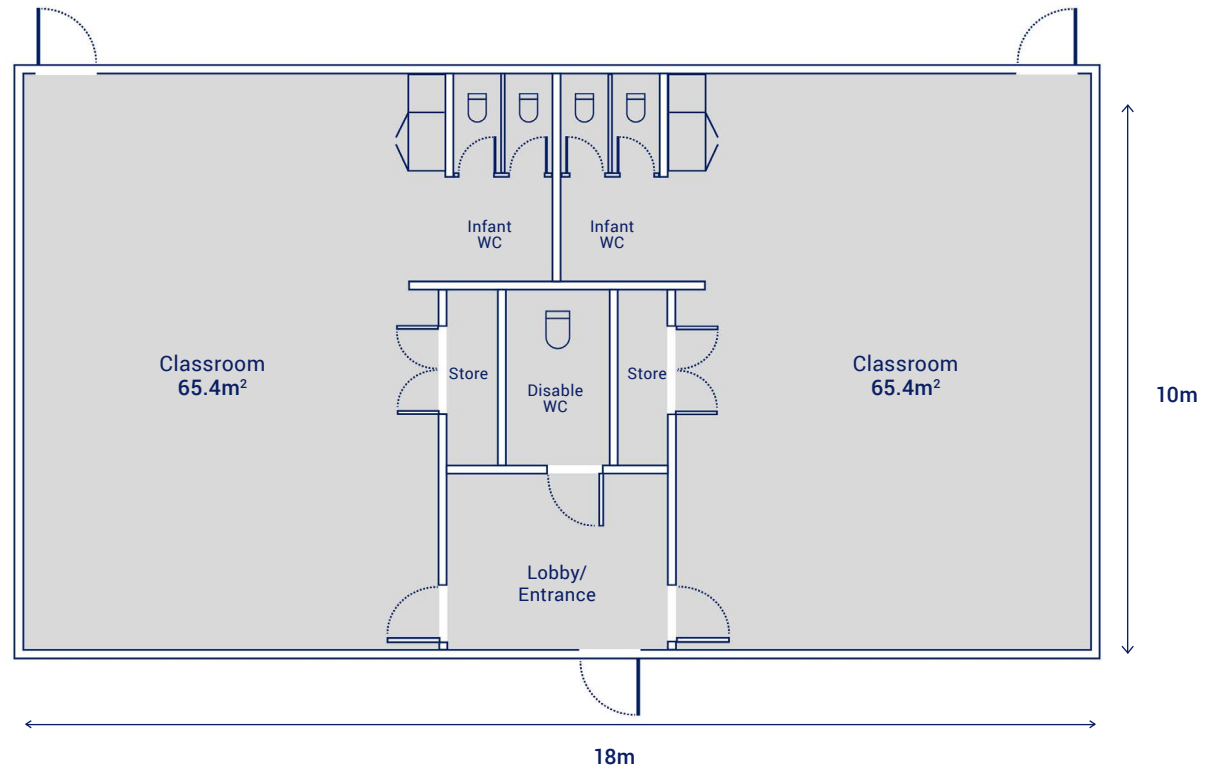
Ref: PCL0322

Dimensions: 18m x 10m

Number of modules: 6

Overall size: 180m²

A single-storey classroom building designed for primary or reception classroom teaching, 2 classrooms 65m² each with sink and access to primary toilets, lobby area and disabled WC.



Single-Storey Double Classroom Building

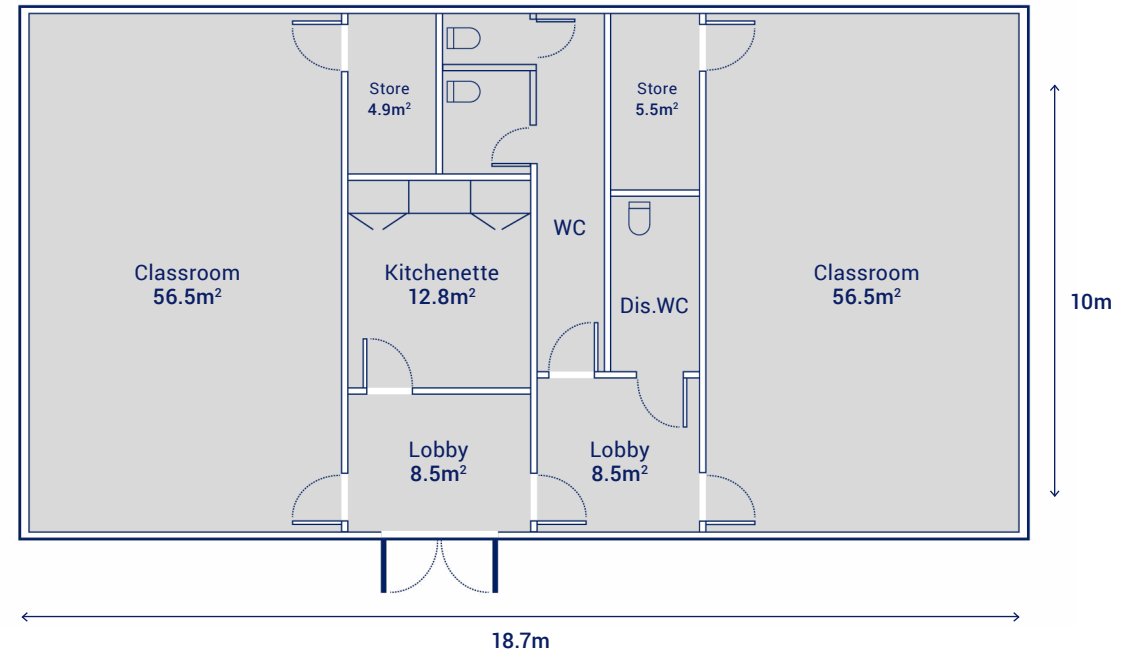
Ref: PCL0315

Dimensions: 18.7m x 10m

Number of modules: 6

Overall size: 187m²

Double classroom building with space for 30 children per classroom.

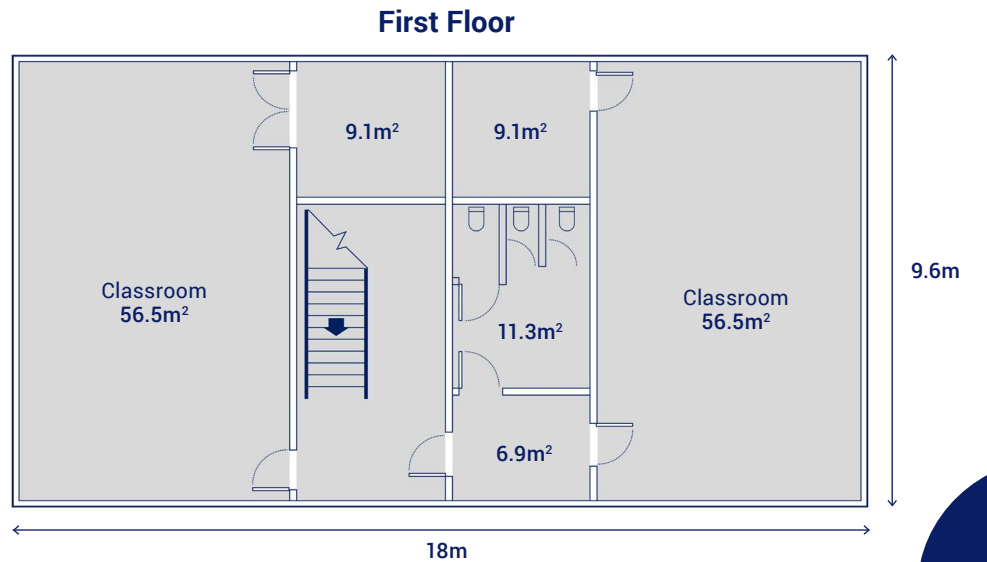
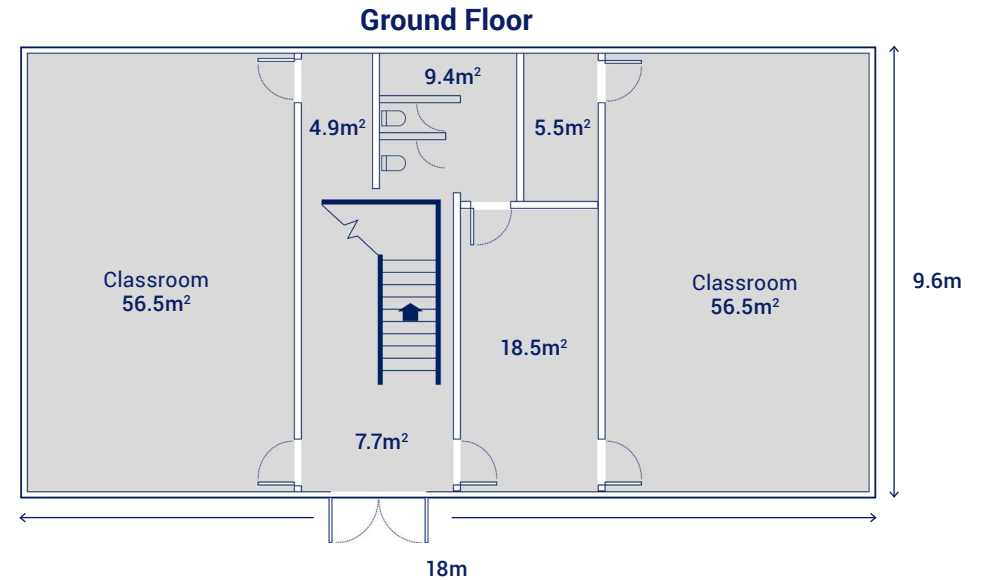


Two-Storey Classroom Building

Ref: PCL303

Dimensions: 9.6m x 18m
Number of modules: 12
Overall size: 345.6m²

Two-storey building comprising of classrooms, male & female toilets, stores, locker area and internal stairs.



Two-Storey 4 Classroom Building with Toilets

Ref: 1296DSFCTD (Education)

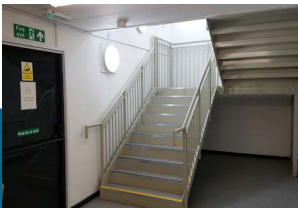
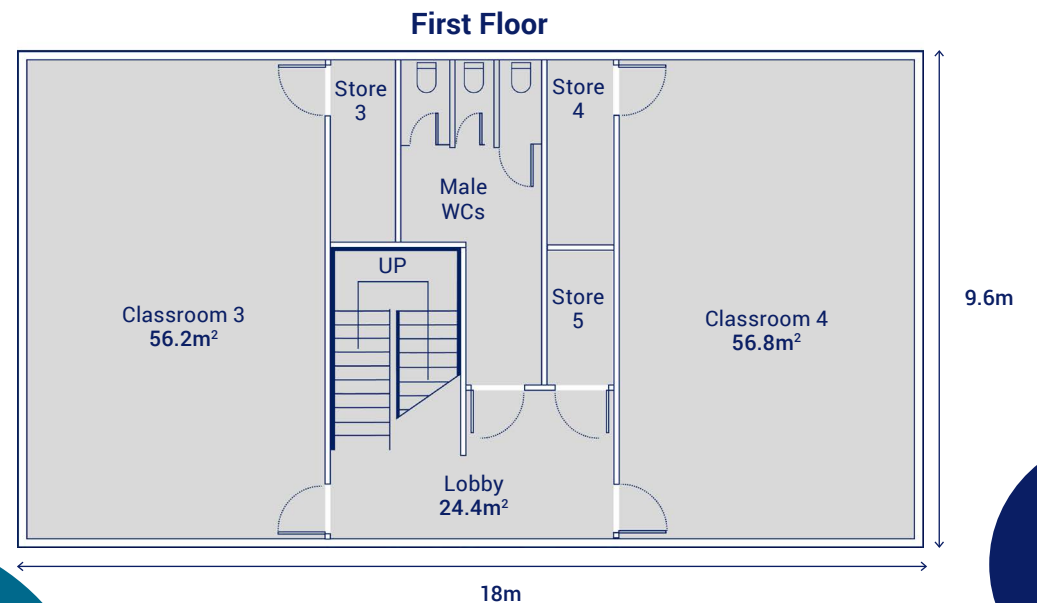
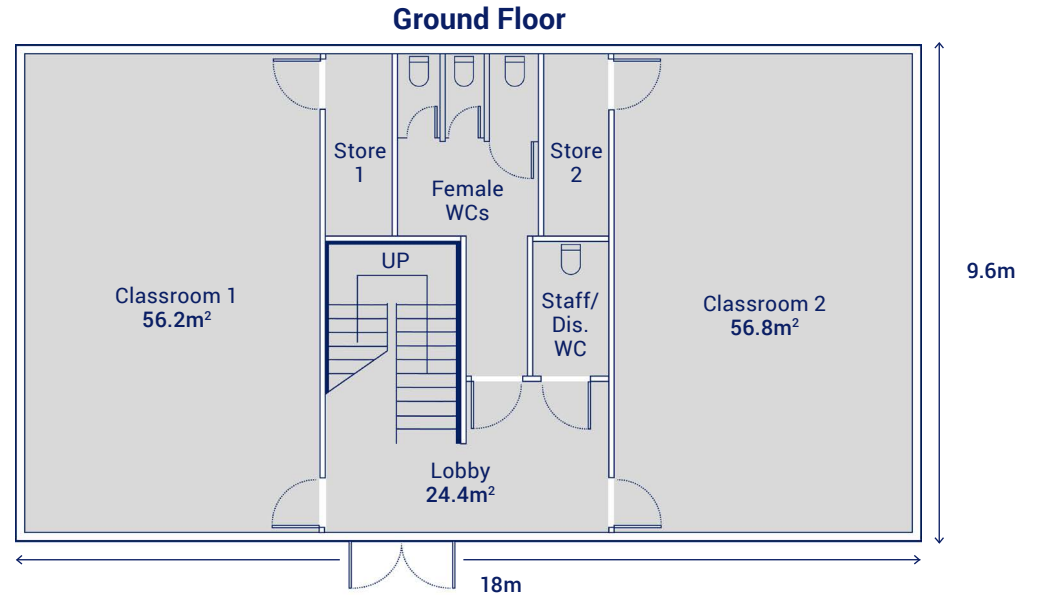
Dimensions: 9.6m x 18m

Number of modules: 12

Overall size: 345.6m²

Two-storey building comprising of 4 classrooms with lobby area, store rooms & toilets.

The building has been designed in line with building regulations.



Large Single-Storey School Hall/Dining Building

Ref: PCL0319

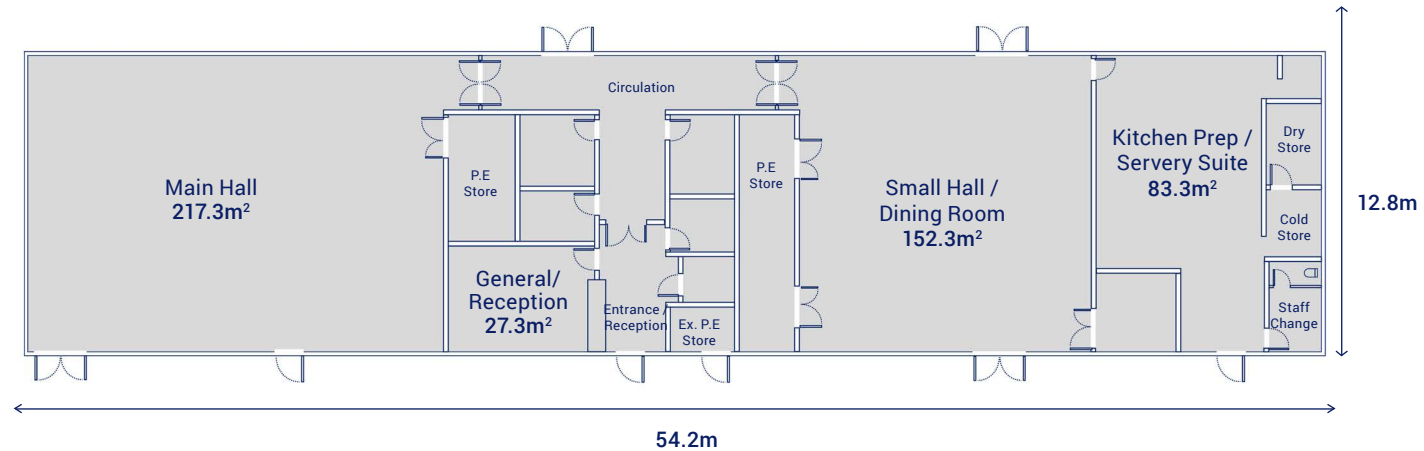
Dimensions: 54.2m x 12.8m

Number of modules: 18

Overall size: 693m²

A large single-storey building with 2 dining halls/sports halls.

Central space includes large and small meeting room, sick bay and 3 store rooms.



Large Two-Storey Education Building

Ref: PCL256

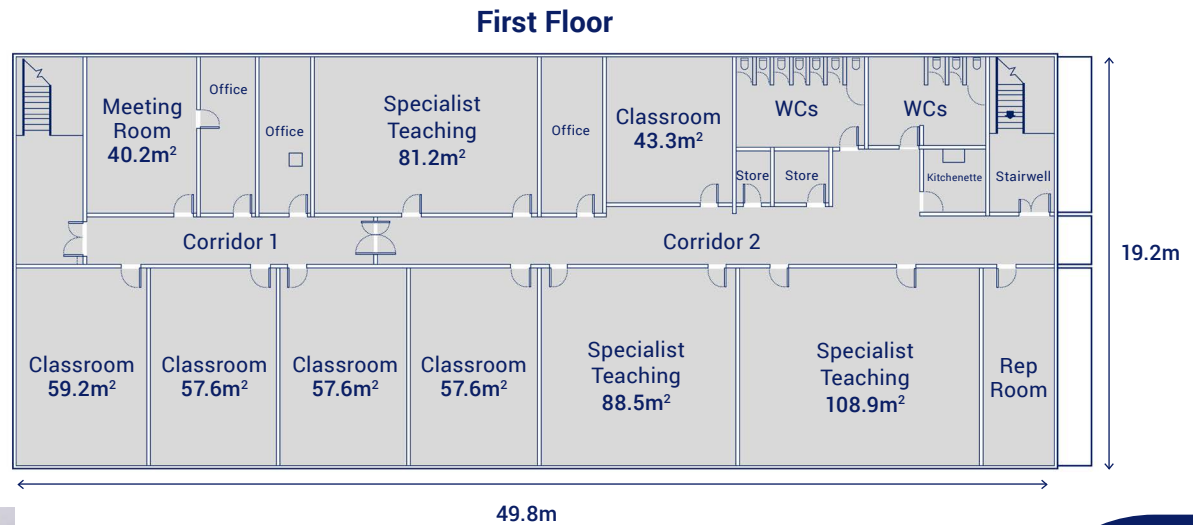
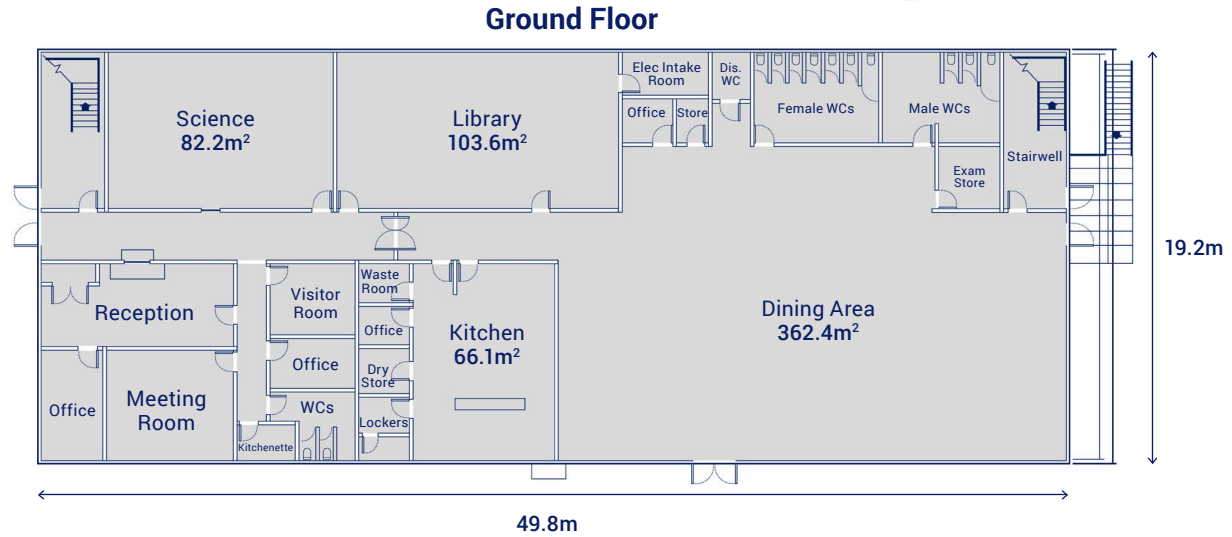
Dimensions: 19.2m x 49.8m

Number of modules: 64

Overall size: 1,910m²

Large two-storey education building comprising of classrooms, dining area, specialist teaching & ancillary space.

The building has been designed in line



Large Primary School Building

Ref: PCL0318

Dimensions: 77.8m x 19.9m

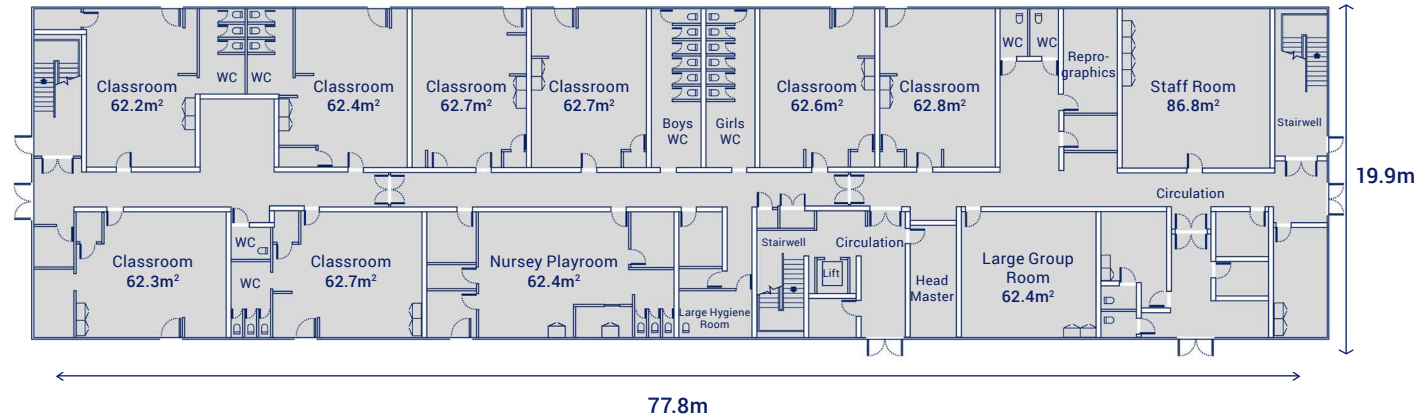
Number of modules: 100

Overall size: 3,096m²

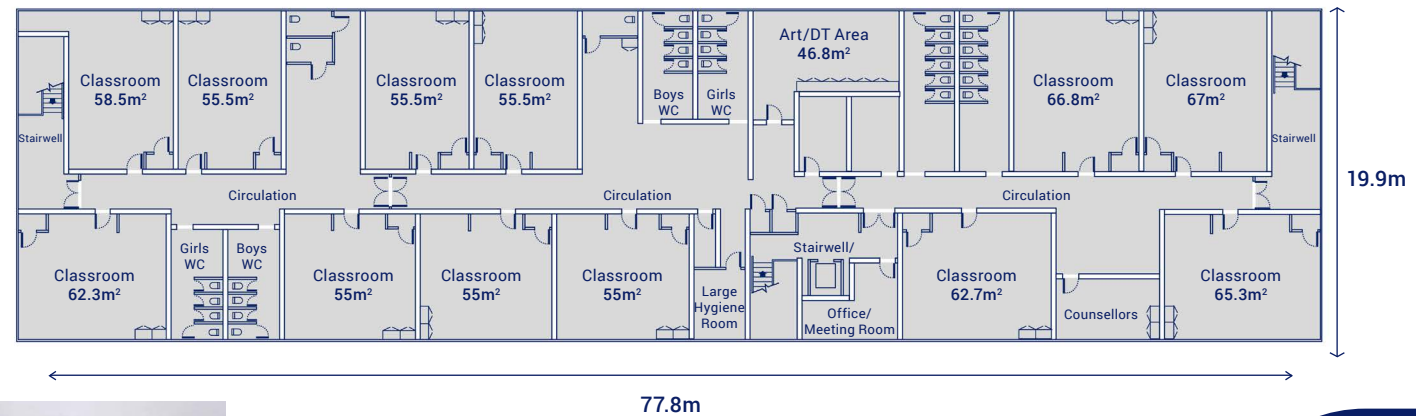
Large two-storey primary school previously hired to support a DfE decant education project for a 2½ year hire.

Layout includes reception classrooms (x4), nursery, SEN rooms, classrooms Yrs. 1-4, primary toilets and staff facilities.

Ground Floor



First Floor





Sustainability

Algeco is committed to sustainable development. The UN Sustainable Development Goals provide a shared blueprint for peace and prosperity for people and the planet, now and into the future. Here's how we're meeting



SDG 12 – Responsible Consumption & Production

Goal: Ensure sustainable consumption and production patterns.

Our sustainability roadmap details plans to switch to renewable and sustainable energy sources, offset carbon, and enhance our circular economic activities through leasing, re-deploying and end-of-life recycling.

SDG 9 – Industry, Innovation & Infrastructure

Goal: Build resilient infrastructure, promote inclusive and sustainable industrialisation and foster innovation.

We are an EcoVadis Silver member, recognising our commitment to sustainable practices and continually improving our corporate social responsibility.

SDG 13 – Climate Action

Goal: Take urgent action to combat climate change and its impacts.

Algeco, along with our parent company, the Modulaire Group, are committed to achieving Net Zero emissions by 2050, and helping our customers do the same.

SDG 4 – Quality Education

Goal: Ensure inclusive and equitable quality education and promote lifelong learning opportunities for all.

We received the Investors in Young People Gold Award. We will continue this commitment to positive outcomes for young people with up to 30 apprenticeships by the end of 2021.

SDG 5 – Gender Equality

Goal: Achieve gender equality and empower all women and girls.

We are prolific supporters of Women in Construction, half our workforce composed of women working throughout the company.

SDG 11 – Sustainable Cities & Communities

Goal: Make cities and human settlements inclusive, safe, resilient and sustainable.

We are a Partner and Gold member of the Supply Chain Sustainability School, demonstrating our active participation in the school to increase our sustainability knowledge and competence.

Monitoring our Progress

Our 2025 sustainability and ESG commitments

To deliver on our focus areas, we have outlined the following commitments to 2025, when we will review our targets and timeframes for completion. Alongside this, we have started our ESG disclosures and have mapped our key focus areas to create an ESG dashboard to monitor our progress.

All underpinned by the TCFD, UNGC and SDGs

2021

Environmental

- Report to Board progress on Net Zero Strategy through the ESGS committee
- 4 reviews per annum
- Establish Group Operational Carbon baseline tonnes of annual Scope 1 and 2 for 2020
- Establish Group Operational Energy Intensity per Modular Space Unit based on carbon footprint
- Undertake an assessment of carbon footprint of a typical Modular Space Unit (baseline 2020)
- Roll out a Group-wide strategy to reduce or mitigate Scope 1 and 2
- Design and build New Frankfurt Branch using Best Available Technology (BAT) for sustainability to achieve BREEAM Outstanding accreditation

Social

- Zero fatalities
- Reduce Lost Time Incident Frequency Rate (LTIFR) per 100,000 by 15%
- Group Zero Harm Strategy rollout
- Launch Wellbeing Helpline in every SBU (6/6)
- Rollout a Group-wide Equality, Diversity & Inclusion strategy and training
- Establish Employee Retention Rate
- Establish a Voluntary Labour Turnover Rate
- Establish Involuntary Labour Turnover Rate
- Create a Talent Development Programme

Governance

- Rollout of Code of Ethics and Anti- Corruption Policy and related training to all employees (new starters 3 months)
- Establishment of ESG & Sustainability Committee
- ESG & Sustainability Materiality assessment – 2 reviews
- ESG & Sustainability Disclosure Practice – 2 reviews
- Sustainability & ESG, climate-related risks and opportunities – 2 reviews
- Cyber risks to be reviewed with the board at least once a year
- Rollout of Cyber Security Policy and related training (new starters 3 months grace)
- Signature of the UN Global Compact

2022



Resource Efficiency

Environmental

- Implement Internal Climate Change and Circular Design Key Principles Protocols for new modular space unit designs
- Greening of Supply Chain and ESG Protocols for Suppliers
- Establish Climate Adaptation Plans for each SBU
- Biodiversity Impacts Protocols for Modulaire sites
- Frankfurt Branch assessment for BREEAM
- Establish Group Operational Carbon baseline tonnes of annual Scope 3 for 2021
- Establish Science Based Targets

Social

- Paid Voluntary Time – 5,000 hrs pa.
- Completion of a global employee satisfaction survey
- Develop a Graduate Programme in all SBUs
- Group participate and undertake three UN Days: March 8th – International Women’s Day; April 28th – World Day for Safety and Health at Work; October 10th – World Mental Health Day

Governance

- Commence group-wide Supply Chain audit for modern day slavery
- All design and assembly facilities to achieve ISO 14001/ ISO 9001
- Cyber risks to be reviewed with the board at least once a year
- Rollout of Cyber Security Policy and related training (new starters 3 months grace)
- Signature of the UN Global Compact
- Group-wide strategy to support the donation and discounting of units to support local community groups

2023



Low Carbon Solutions

Environmental

- Source 100 % Renewable Electricity for the Group where available
- Roll out a Group-wide strategy to reduce or mitigate Scope 3

Social

- Increase overall female participation at Board and Senior Management level
- Increase overall proportion of female employees
- Map gender wage gap for all SBUs
- Paid Voluntary Time – 7500 hrs pa.
- Group participate and undertake three UN: March 21st – International Day for the Elimination of Racial Discrimination;
- June 5th – World Environment Day; December 10th – Human Rights Day

2024

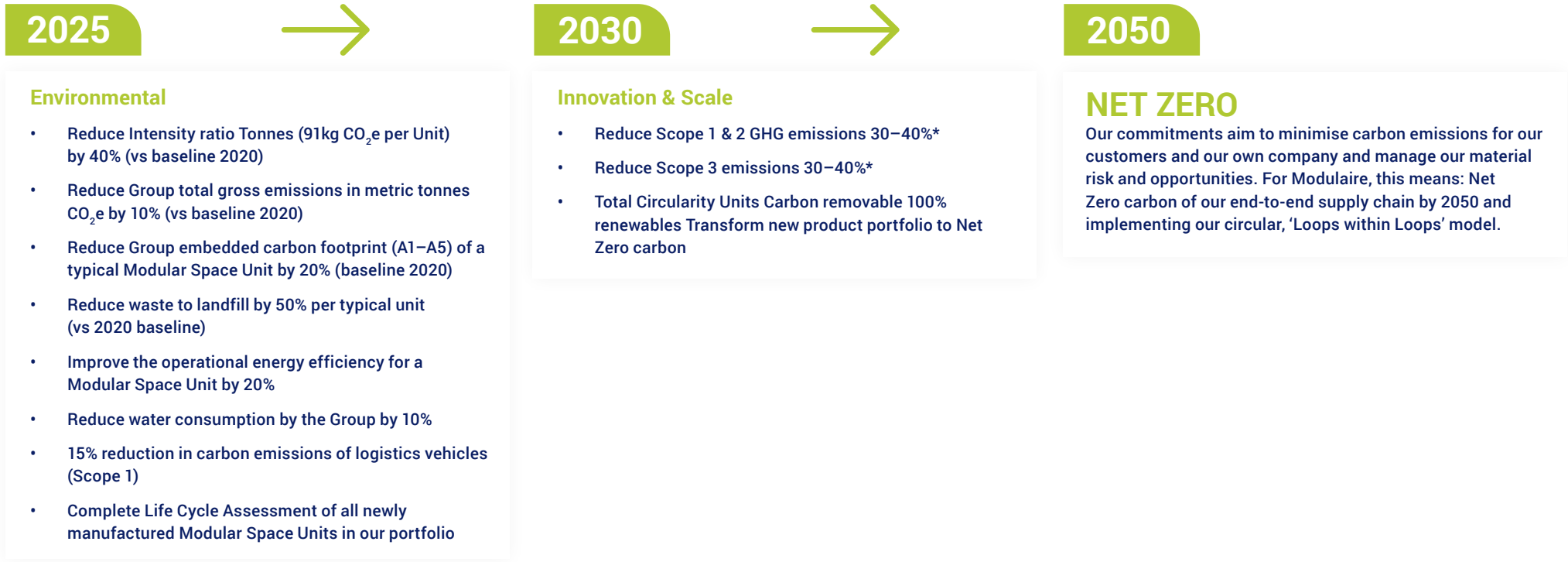
Social

- Paid Voluntary Time – 10,000 hrs pa.

Governance

- Increase number of locations with Management Systems e.g. ISO 14001/ISO 9001





Modulaire Path to Net Zero

From a 2020 emissions base line:
Modulaire path to Net Zero by 2050

Reduce scope 1 and 2 GHG emissions 30–40% by 2030

Reduce scope 3 emissions 30–40% by 2030





Secure your building now

Call our building expert

Ricky Barford, Sales Director Modular Hire

 07891 819 150

 ricky.barford@algeco.com

